

Commercial Vernacular Style

This style of architecture is the most common commercial design in the United States during the mid-eighteen hundreds through the 1940's. These buildings were rectangular in floor plan with usually the narrow elevation fronting the street. Brick is the usual construction material and is used as part of the façade design. Stucco was another common façade treatment for commercial buildings. Ornamentation was simple with cast concrete detailing or decorative brickwork. The building façade was organized into distinct zones commonly containing one or two parts.

The one part façade was one story and framed by a structural framework consisting of columns, kick-panels and a cornice topped by a parapet along and above a flat roof. Large display windows were used to show merchandise. This is the most common type in Tarpon Springs.

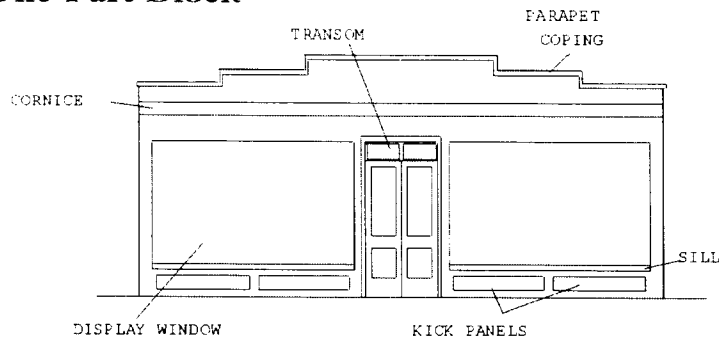
The two part commercial building was multi-story. The first level was the same as a one-part façade design and generally housed commercial uses or hotel or apartment lobbies. The upper zone was divided from the first floor by a stringcourse of brick. Usually apartments, hotel rooms or offices occupied the upper levels.

Common Characteristics (*key features*):

- Square or rectangular floor plan.
- Continuous or slab brick or concrete foundation.
- One-three stories in height.
- *Buildings were situated on or close to the property line (street front), formed a continuous row of storefronts and were serviced from the rear through an alley.*
- *Buildings form a continuous row of storefronts along the street.*
- *Brick with common or running bond, concrete block, and rough texture stucco were common exterior materials.*
- *Flat roof with parapet (continuous or stepped).*
- *Front doors are usually double doors with light transoms above.*
- *Large display windows on the first floor with a sill and kick plates beneath and double-hung sash windows usually two over two panes on the upper floors. The windows would have lintels above and sills below.*
- Flat canopy, typically constructed of metal, over the sidewalk.

Common Features and Examples within the District

One-Part Block



Two-Part Block

