

Queen Anne Style

Queen Anne is certainly the most picturesque of the nineteenth and twentieth century architectural styles in Florida. This uniqueness is exhibited by the extensive decorative façade detailing. There are few remaining examples of this style in Tarpon Springs, mostly in the Local Historic District.

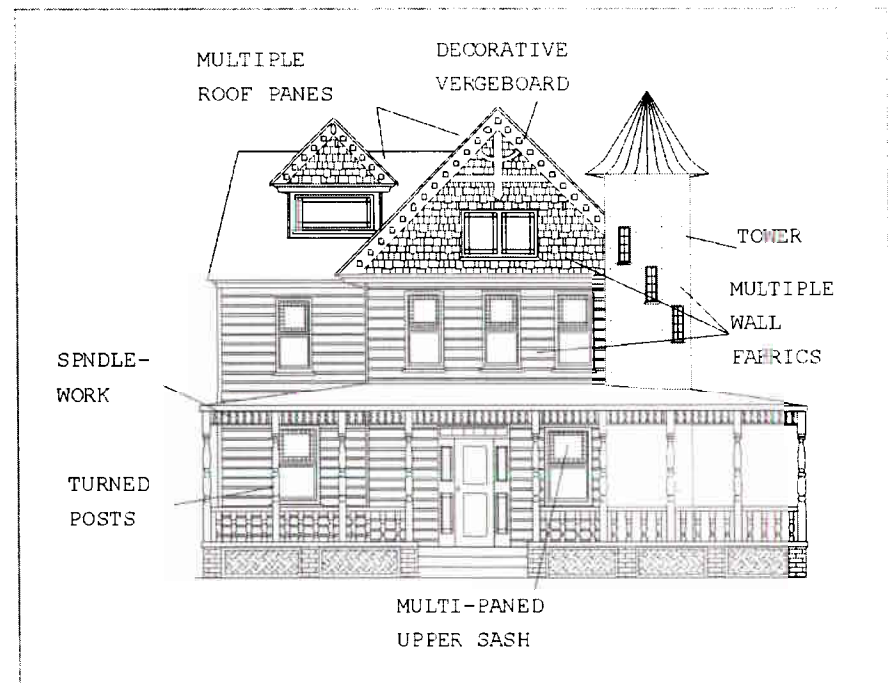
Queen Anne houses were typically wood frame structures that were irregular in massing. They were sided with a variety of wooden materials such as shingles (which included patterns such as “fish scale”) and weatherboard. This architectural style features multiple roof planes typically with steeply pitched gable (usually with a dominant front gable) or hip roofs. Gable ends typically were decorated with verge board. Towers are sometimes a feature of the Queen Anne style. A large front porch with balustrades and decorative spindlework and support columns is another common feature. Windows are double hung sash with a decorative upper sash and single lower sash light.

Common Characteristics (key features):

- Irregular floor plan.
- Brick pier foundation.
- One and one-half to two and one-half stories in height.
- **Multiple roof planes usually steeply pitched gable with a dominant front gable or hip roof. Roofing materials include wood or composition shingle or embossed metal.**
- **Exterior surface materials create a textured look and include wood siding or shingles arranged in a pattern.**

- **Large front porch with decorative detailing including balustrades, spindlework, brackets and columns.**
- **Decorative roof features include vergeboard and other ornamentation on the gable ends and finials on the gable end roof peaks as well as roof brackets.**
- **Windows are double-hung sash with the upper pane comprised of a single light surrounded by smaller lights (panes).**

Common Features



Example within the District

