

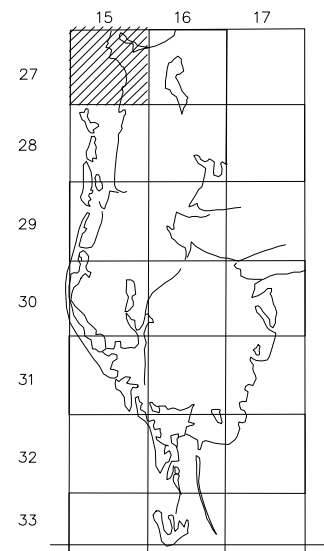
PROPERTY OWNERSHIP MAP  
PINELLAS COUNTY

JIM SMITH  
PROPERTY APPRAISER

SCALE 1" = 300'  
DATE OF MAP: 05/09/90



COUNTY LOCATOR



SHEET MATCH

GULF OF MEXICO	PASCO COUNTY	PINELLAS COUNTY
OF	N04-27-15	N03-27-15
MEXICO	S04-27-15	S03-27-15

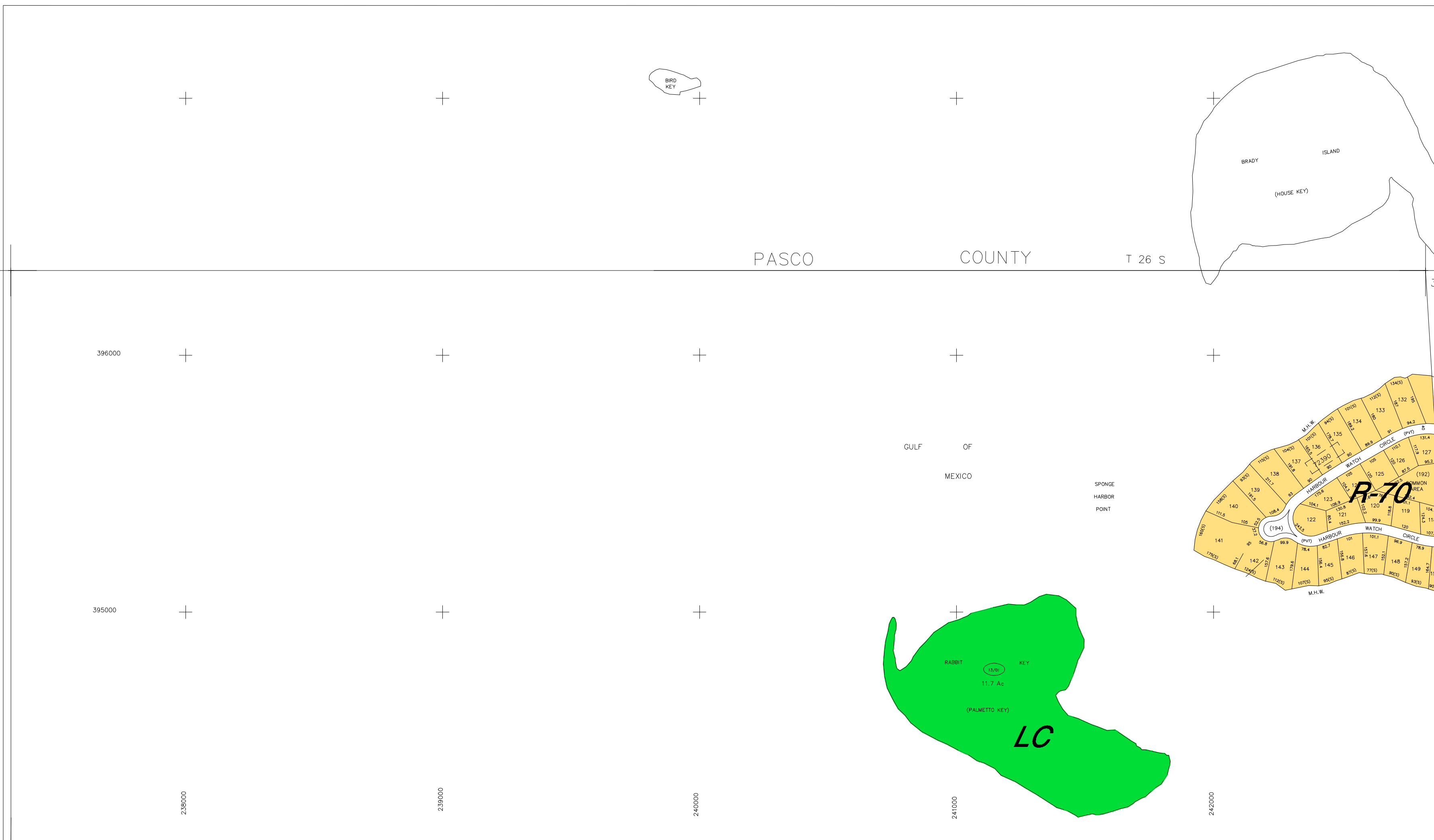
LEGEND

COUNTY LINE	---	AREA (FROM DEED)	10.5 Ac
CITY LIMIT LINE	---	AREA (CALCULATED)	10.5 Ac(2)
TAX DISTRICT LINE	---	DIMENSIONS (FROM DEED)	100.3
ROAD R/W	---	DIMENSIONS (SCALED)	100(5)
RAILROAD R/W	---	WATER	
SUB LINE	---	INTERSTATE HIGHWAY	(275)
PROPERTY LINE	---	U.S. HIGHWAY	(19)
LAND HOOK	---	STATE HIGHWAY	(60)
INTERIOR TRACT LINE OR ORIGINAL LOT LINE	---	COUNTY HIGHWAY	(1)
SUB LOT NUMBERS	31	ROADS OR STREETS	BY NAME
PARCEL NUMBER (W & B)	(05/00)	MAJOR TRANSMISSION LINES	POWER GAS OR OIL
BLOCK NUMBER	(2)		
STATE PLANE COORDINATES	375000	SECTION CORNERS	2   1 11   12
CHURCHES, SCHOOLS, CEMETRIES, AIRPORTS, GOVERNMENT LANDS, ETC.	275000	ASSIGNED M & B PINELLAS FARMS/GROVES GEO-LOCATOR (BLK FIELD)	200   100 300   400
SUB NUMBER	[ ]	OTHER ASSIGNED BLK/LOT DESIGNATOR	(3)

REVISIONS

DATE	BY	CHANGES OR ADDITIONS
05/96	J.D	EDGE-MATCH
08/99	TS	UPDATE/MISC
03/01	ENTZ	RE-EDGE-MATCH

SECTION N 1/2 204  
TOWN 27 SOUTH, RANGE 15 EAST  
N04-27-15  
MAP NUMBER



▲ SEE SPECIAL SETBACKS

NO.	NAME	PB/ PG
▲ 72390	POINTE ALEXIS NORTH PHASE III (03-27-15)	102/072

Produced by MDT V-1, Copyright (c) 1991/1992, Pinellas County, FL, Property Appraiser. All Rights reserved.  
ATTENTION: ALTHOUGH THIS MAP/FILE REPRESENTS A SIGNIFICANTLY HIGH DEGREE OF ACCURACY AND COMPLETENESS, IT WAS PREPARED FOR USE IN PROPERTY ASSIGNMENT. INFORMATION ON THE DOCUMENT MAY BE AN AVERAGE OF 30 DAYS OUT OF DATE FROM THE ORIGINAL SURVEYED RECORDS KEPT ON FILE IN THE OFFICE. THIS MAP/FILE SHOULD NOT BE RELIED ON FOR ANY REASON AS AN ALTERNATIVE TO A QUALIFIED SURVEY. PLEASE CONSULT A LICENSED PROFESSIONAL LAND SURVEYOR FOR ANY FURTHER INQUIRY REGARDING THIS MAP/FILE.