

PROPERTY OWNERSHIP MAP
PINELLAS COUNTY

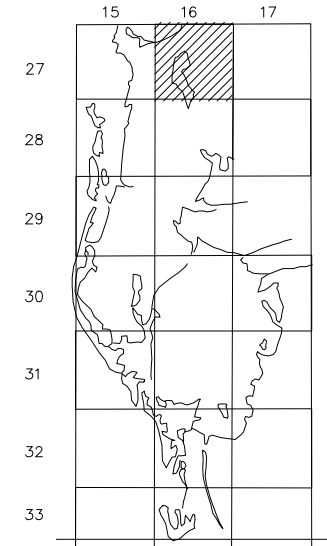
JIM SMITH
PROPERTY APPRAISER

SCALE 1" = 300'

DATE OF MAP: 02/07/89



COUNTY LOCATOR



SHEET MATCH

PASCO	COUNTY
N06-27-16	N05-27-16
S06-27-16	S04-27-16

LEGEND

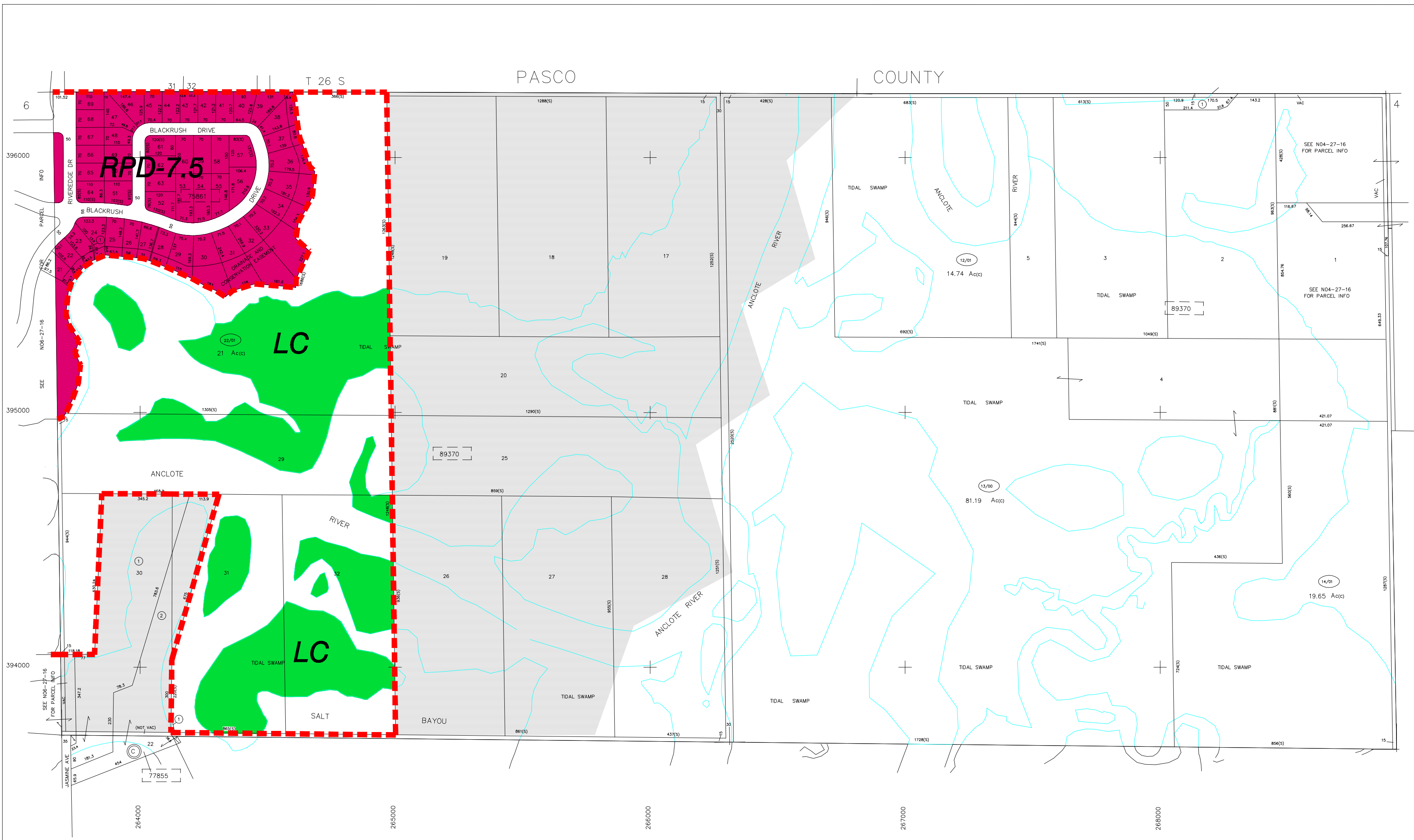
COUNTY LINE	---	AREA (FROM DEED)	10.5 Ac
QTY LIMIT LINE	---	AREA (CALCULATED)	10.5 Ac(1)
TAX DISTRICT LINE	---	DIMENSIONS (FROM DEED)	100.3
ROAD R/W	---	DIMENSIONS (SCALED)	100(3)
RAILROAD R/W	---	WATER	
SUB LINE	---	INTERSTATE HIGHWAY	275
PROPERTY LINE	---	U.S. HIGHWAY	19
LAND HOOK	---	STATE HIGHWAY	60
INTERIOR TRACT LINE OR ORIGINAL LOT LINE	---	COUNTY HIGHWAY	1
SUB LOT NUMBERS	---	ROADS OR STREETS	BY NAME
PARCEL NUMBER (M & B)	---	MAJOR TRANSMISSION LINES	POWER GAS OR OIL
BLOCK NUMBER	---	SECTION CORNERS	2 1 11 12
STATE PLANE COORDINATES	---	ASSIGNED M & B PINELLAS FARMS/GROVES GEO-LOCATOR (BLK FIELD)	200 100 300 400
CHURCHES, SCHOOLS, CEMETERIES, AIRPORTS, GOVERNMENT LANDS, ETC.	---	OTHER ASSIGNED BLK/LOT DESIGNATOR	(3)

REVISIONS

DATE	BY	CHANGES OR ADDITIONS
01/02	SAW	UPDATE/SPLIT
08/01	PC	EDGEMATCH
11/01	DS	UPDATE/SPLIT
11/95	JD	REDO COORD/REDRAFT
02/96	ENTZ	ADJ E 1/4 COR PER SURVEY DEPT

SECTION N 1/05
TOWN 27 SOUTH, RANGE 16 EAST

N05-27-16
MAP NUMBER



NO.	NAME	PB/ PG
75861	RIVER WATCH (06-27-16)	112/079
77855	SAIL HARBOR	94/095
89370	TAMPA & TARPON SPRINGS LAND CO	H1/116

Produced by MEIT 101, Copyright (c) 1991-1992, Pinellas County, FL Property Appraiser. All Rights reserved.
ATTENTION: Although this map file represents a reasonably true survey of accuracy and completeness, it was prepared for use in property assessment. Information on the document may be an amalgam of old data, out of date or an official, or a false recording. Information on the title of this office, this map file should not be relied on for any reason as an alternative to a qualified survey. Please contact a licensed professional land surveyor in any matter involving property boundaries or rights of way.