

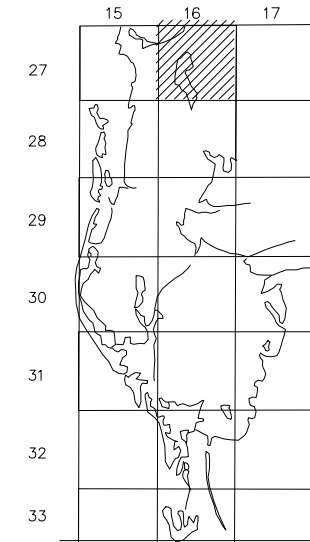
PROPERTY OWNERSHIP MAP
PINELLAS COUNTY

JIM SMITH
PROPERTY APPRAISER

SCALE 1" = 300'
DATE OF MAP: 09/30/88



COUNTY LOCATOR



SHEET MATCH

S06-27-16	S05-27-16	S04-27-16
N07-27-16	N08-27-16	N09-27-16
S07-27-16	S08-27-16	S09-27-16

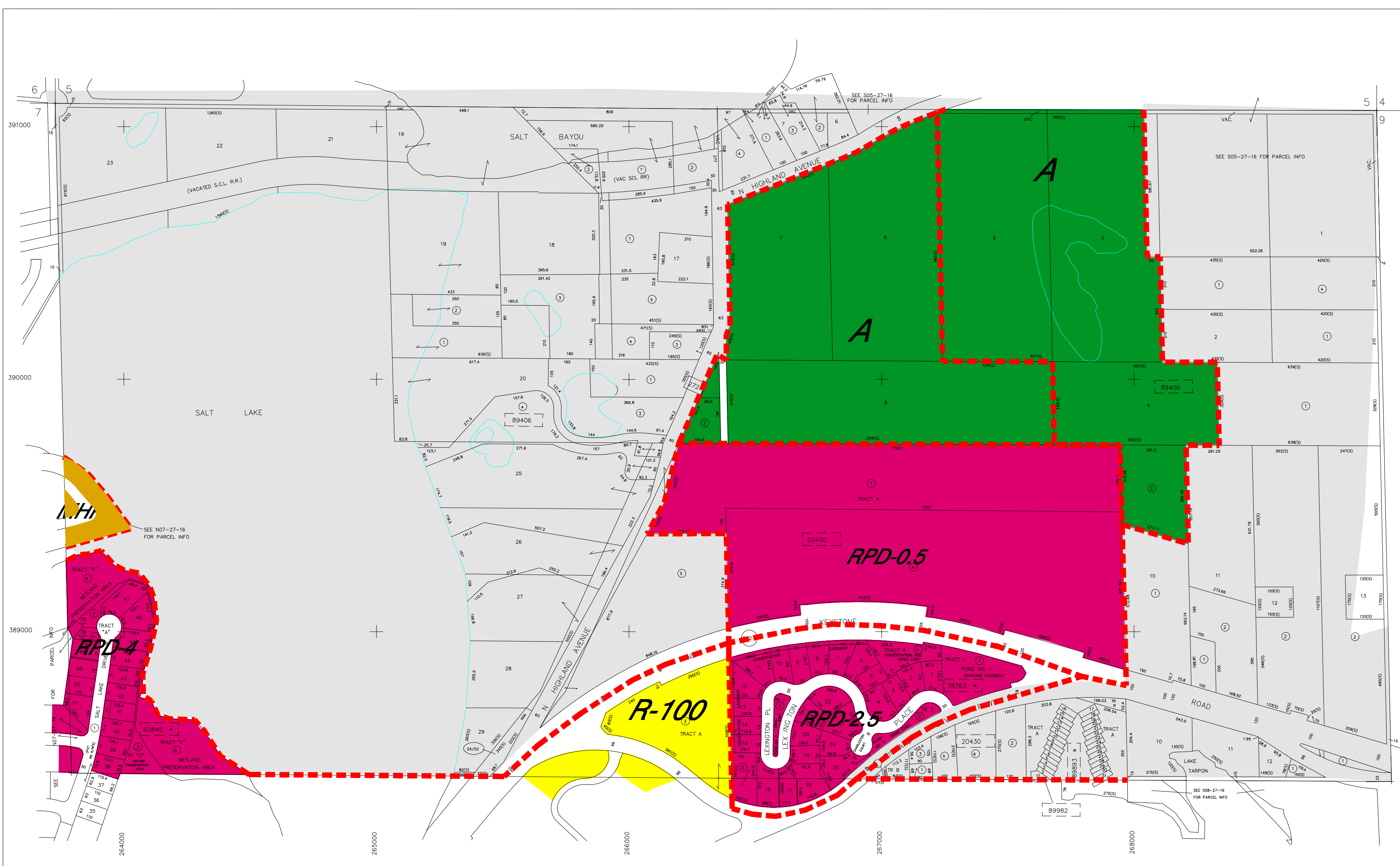
LEGEND

COUNTY LINE	AREA (FROM DEED)	10.5 Ac
CITY LIMIT LINE	AREA (CALCULATED)	10.5 Ac(3)
TAX DISTRICT LINE	DIMENSIONS (FROM DEED)	108.3
ROAD R/W	DIMENSIONS (SCALED)	100(3)
RAILROAD R/W	WATER	
SUB LINE	INTERSTATE HIGHWAY	275
PROPERTY LINE	U.S. HIGHWAY	19
LAND HOOK	STATE HIGHWAY	60
INTERIOR TRACT LINE OR ORIGINAL LOT LINE	COUNTY HIGHWAY	1
SUB LOT NUMBERS	ROADS OR STREETS	BY NAME
PARCEL NUMBER (M & B)	MAJOR TRANSMISSION LINES	POWER
BLOCK NUMBER		GAS OR OIL
STATE PLANE COORDINATES	SECTION CORNERS	2 1 11 12
CHURCHES, SCHOOLS, CEMETERIES, AIRPORTS, GOVERNMENT LANDS, ETC.	ASSIGNED M & B	200 100 300 400
SUB NUMBER	PINELLAS FARMS/GROVES GEO-LOCATOR (BLK FIELD)	
SUB PARCEL NO.	OTHER ASSIGNED BLK/LOT DESIGNATOR	(3)

REVISIONS

DATE	BY	CHANGES OR ADDITIONS
08/01	PC	UPDATE/MISC.
09/01	TE	UPDATE/COMB
12/01	SAW	UPDATE/MISC CORR./EDGEMATCH
07/01	MW	UPDATE/MISC.
11/95	JD	REDO COORD./REDRAFT SECTION
05/05	AM	ORD. 2004-15,16 & 17
04/06	AM	Leisure Lakes Village

SECTION N 1208
TOWN 27 SOUTH, RANGE 16 EAST
MAP NUMBER N08-27-16



* SEE PLAT FOR DIMENSIONS
▲ SEE SPECIAL SETBACKS

NO.	NAME	PB/ PG
20430	DAVIS REPLAT	23/029
▲ * 60845	NORTH LAKE OF TARPON SPRINGS - PHASE 1 (07-27-16)	119/040
▲ * 78763	SAVANNAH POINTE	116/035
89406	TAMPA & TARPON SPRINGS LAND CO	H1/116
* 89893	TARPON LANDINGS	91/009
89982	TARPON SPRINGS OFFICIAL MAP (12-27-15)	D-G/800

Produced by MDT V2.1, Copyright (c) 1998,1999, Pinellas County, FL, Property Appraiser. All rights reserved.
 WARNING: Although this map was prepared by a qualified professional, it was prepared for use in property assessment. Information on this document may be an average of an hour out of the office as official, un-audited information. It is not intended to be used as a legal document. It is not intended to be used for any reason as an alternative to a qualified survey. PLEASE CONSULT A LICENSED PROFESSIONAL LAND SURVEYOR IN ANY MATTER INVOLVING PROPERTY BOUNDARIES OR RIGHTS OF WAY.