

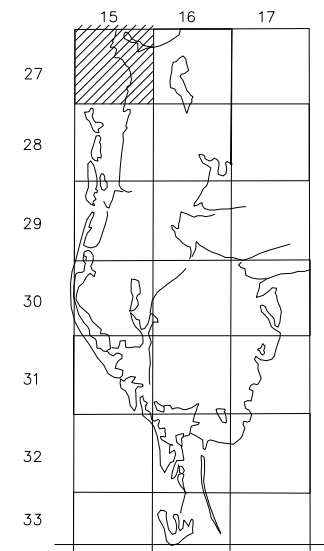
PROPERTY OWNERSHIP MAP  
PINELLAS COUNTY

JIM SMITH  
PROPERTY APPRAISER

SCALE 1" = 300'  
DATE OF MAP: 05/14/90



COUNTY LOCATOR



SHEET MATCH

GULF OF MEXICO	S04-27-15	S03-27-15
N08-27-15	N09-27-15	N10-27-15
S08-27-15	ST. JOSEPH SOUND	S10-27-15

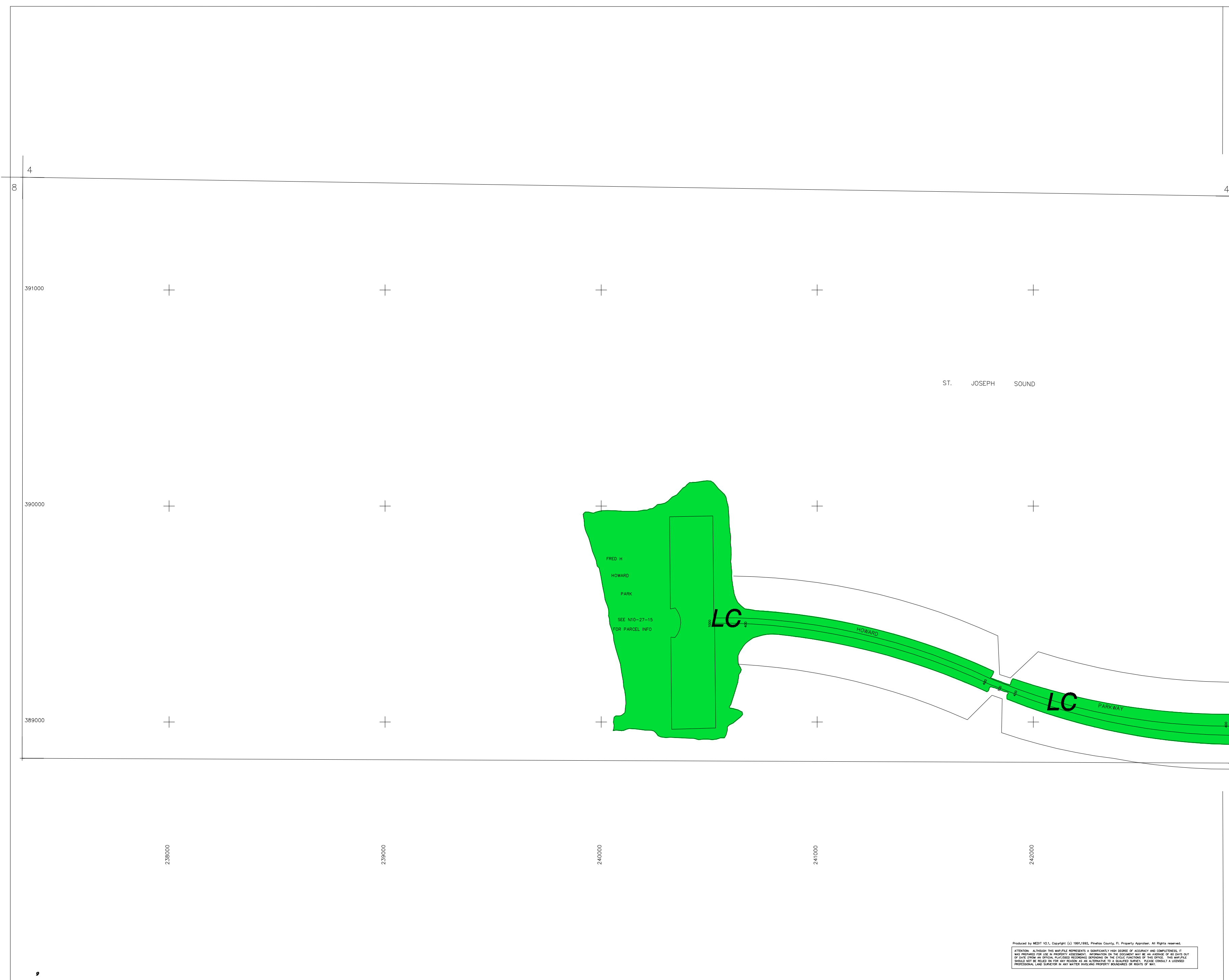
LEGEND

COUNTY LINE	---	AREA (FROM DEED)	10.5	Ac
CITY LIMIT LINE	---	AREA (CALCULATED)	10.5	Ac(c)
TAX DISTRICT LINE	---	DIMENSIONS (FROM DEED)	100.3	
ROAD R/W	==	DIMENSIONS (SCALED)	100(3)	
RAILROAD R/W	==	WATER		
SUB LINE	---	INTERSTATE HIGHWAY		(275)
PROPERTY LINE	---	U.S. HIGHWAY		(19)
LAND HOOK	---	STATE HIGHWAY		(60)
INTERIOR TRACT LINE OR ORIGINAL LOT LINE	---	COUNTY HIGHWAY		(1)
SUB LOT NUMBERS	---	ROADS OR STREETS	BY NAME	
PARCEL NUMBER (M & B)	(00.00)	MAJOR TRANSMISSION LINES	POWER	
BLOCK NUMBER	(2)		GAS OR OIL	
STATE-PLANE COORDINATES	375000	SECTION CORNERS	2	1
	275000		11	12
CHURCHES, SCHOOLS, CEMETERIES, AIRPORTS, GOVERNMENT LANDS ETC.		ASSIGNED M & B PINELLAS FARMS/GROVES GEO-LOCATOR (BLK FIELD)	200	100
			300	400
SUB NUMBER		OTHER ASSIGNED BLK/LOT DESIGNATOR		(3)

REVISIONS

DATE	BY	CHANGES OR ADDITIONS
05/96	JD	REDO COORD/EDGEMATCH
08/99	TS	UPDATE/MISC

SECTION N 1/209  
TOWN 27 SOUTH, RANGE 15 EAST  
N09-27-15  
MAP NUMBER



Produced by MDT V2.1, Copyright (c) 1991-1992, Pinellas County, FL, Property Appraiser. All Rights reserved.  
ATTENTION: Although this map file represents a significant level of accuracy and completeness, it was prepared for use in property assessment. Information on this document may be an average of 30 days out of date from an official, finalized recording depending on the cycle frequency of this office. This map file should not be relied on for any reason as an alternative to a qualified survey. Please consult a licensed professional land surveyor in any matter involving property boundaries or rights of way.