

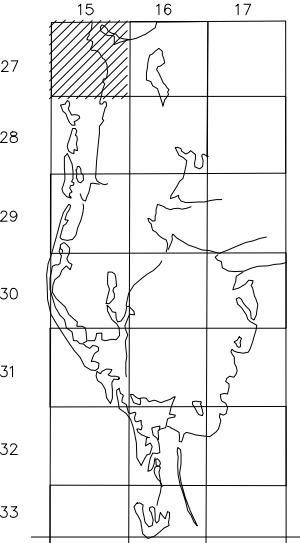
PROPERTY OWNERSHIP MAP
PINELLAS COUNTY

JIM SMITH
PROPERTY APPRAISER

SCALE 1" = 300'
DATE OF MAP: 05/14/90



COUNTY LOCATOR



SHEET MATCH

S04-27-15	S03-27-15	S02-27-15
N09-27-15	N10-27-15	N11-27-15
ST JOSEPH SOUND	S10-27-15	S11-27-15

LEGEND

COUNTY LINE	--- AREA (FROM DEED)	10.5 Ac
CITY LIMIT LINE	--- AREA (CALCULATED)	10.5 Ac(±)
TAX DISTRICT LINE	--- DIMENSIONS (FROM DEED)	100.1
ROAD R/W	--- DIMENSIONS (SCALED)	100(±)
RAILROAD R/W	--- WATER	
SUB LINE	--- INTERSTATE HIGHWAY	(275)
PROPERTY LINE	--- U.S. HIGHWAY	(19)
LAND HOOK	--- STATE HIGHWAY	(60)
INTERIOR TRACT LINE OR ORIGINAL LOT LINE	--- COUNTY HIGHWAY	(1)
SUB LOT NUMBERS	31	BY NAME
PARCEL NUMBER (M & B)	(00.00)	MAJOR TRANSMISSION LINES
BLOCK NUMBER	(2)	POWER GAS OR OIL
STATE PLANE COORDINATES	375000 +	SECTION CORNERS
CHURCHES, SCHOOLS, CEMETERIES, AIRPORTS, GOVERNMENT LANDS ETC.	275000 +	2 1
SUB NUMBER		11 12
SUB PARCEL NO.		BY NAME
		ASSIGNED M & B PINELLAS FARMS/GROVES GEO-LOCATOR (BLK. FIELD)
		200 100
		300 400
		OTHER ASSIGNED BLK/LOT DESIGNATOR
		(3)

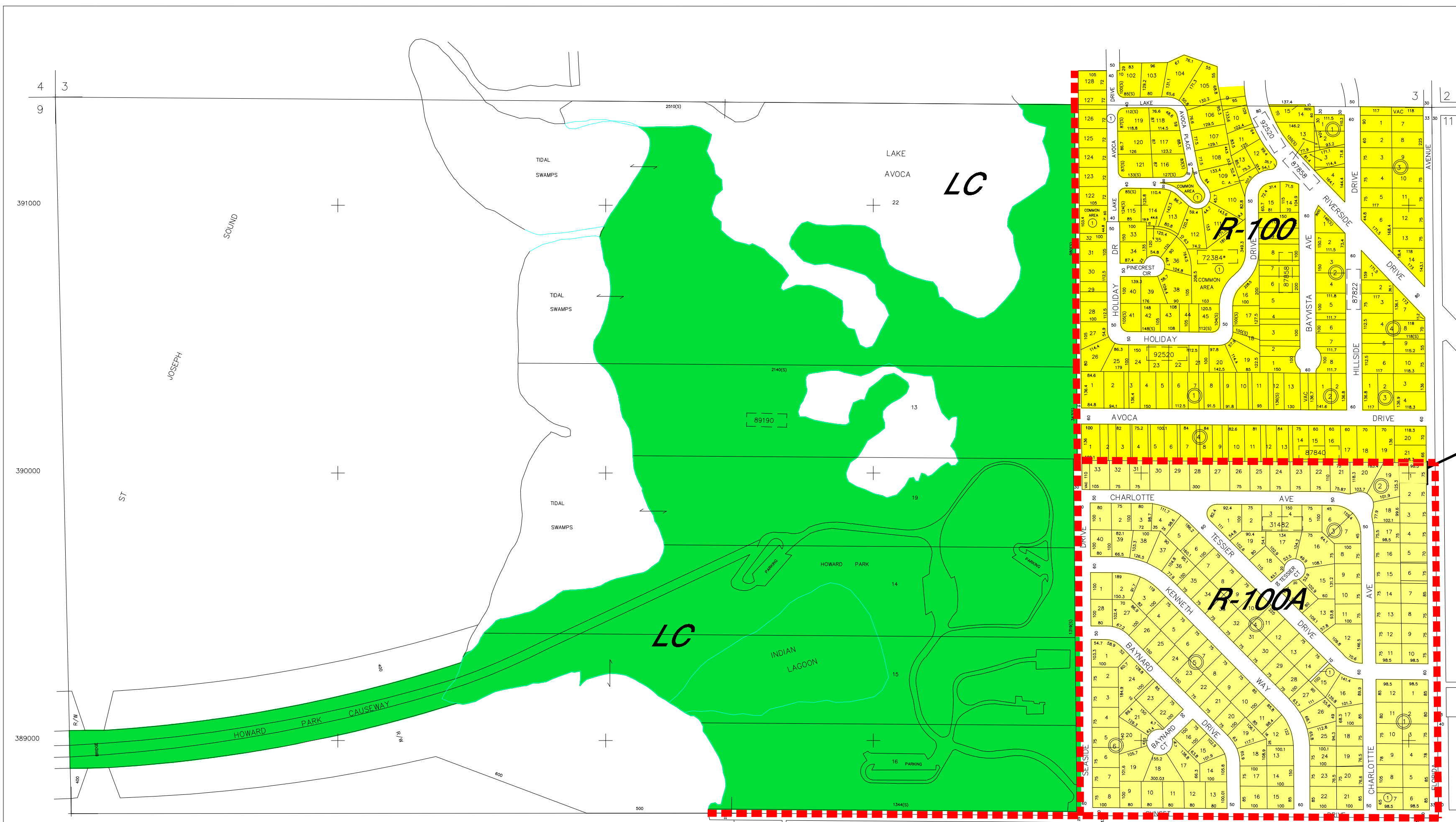
REVISIONS

DATE	BY	CHANGES OR ADDITIONS
12/01	KD	UPDATE/SPLIT
09/01	DS	UPDATE/MISC
05/00	PC	UPDATE/SPLIT
12/00	TS	UPDATE/MISC CORR
06/96	JD	RESD. COORD./REDRAFT SECTION
08/05	AM	LICENSE TO ENCROACH

SECTION N 1/210
TOWN 27 SOUTH, RANGE 15 EAST
MAP NUMBER N10-27-15

Produced by MDTI 02-1, Copyright (c) 1991/1992, Pinellas County, FL Property Appraiser. All rights reserved.

ATTENTION: Although this map represents a computerized map of accuracy and completeness, it was prepared for use as a property record. Information on the document may be an abridgment of the data on file with the official public records department of this office. This map should not be relied on for any purpose as an alternative to a qualified survey. Please consult a licensed professional land surveyor in any matter involving property boundaries or rights of way.



L: LICENSE TO ENCROACH (SEE PINELLAS COUNTY OFFICIAL RECORDS BOOK 9143 PAGE 736) CONCRETE BLOCK WALL (10/27/15/31482/002/0010)

* SEE PLAT FOR DIMENSIONS

NO.	NAME	PB/ PG
31482	GOLDEN GATEWAY HOMES UNIT 1	43/051
* 72384	POINTE ALEXIS SOUTH PHASE II (03-25-15)	93/071
87858	SUNSET HILLS COUNTRY CLUB (03-25-15)	17/027
87822	SUNSET HILLS 2ND ADD	17/041
87840	SUNSET HILLS 3RD ADD	18/033
89190	TAMPA & TARPON SPRINGS LAND CO	HI/116
92520	TURF & SURF ESTATES (03-27-15)	51/026