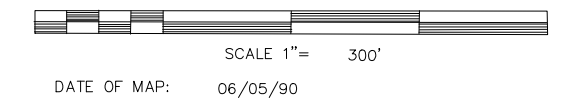
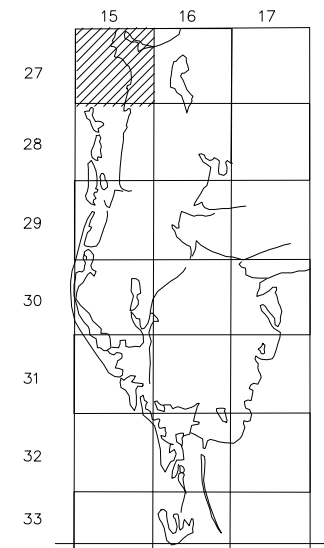


PROPERTY OWNERSHIP MAP  
PINELLAS COUNTY

JIM SMITH  
PROPERTY APPRAISER



COUNTY LOCATOR



SHEET MATCH

ST.	N15-27-15	N14-27-15
JOSEPH	S15-27-15	S14-27-15
SOUND	N22-27-15	N23-27-15

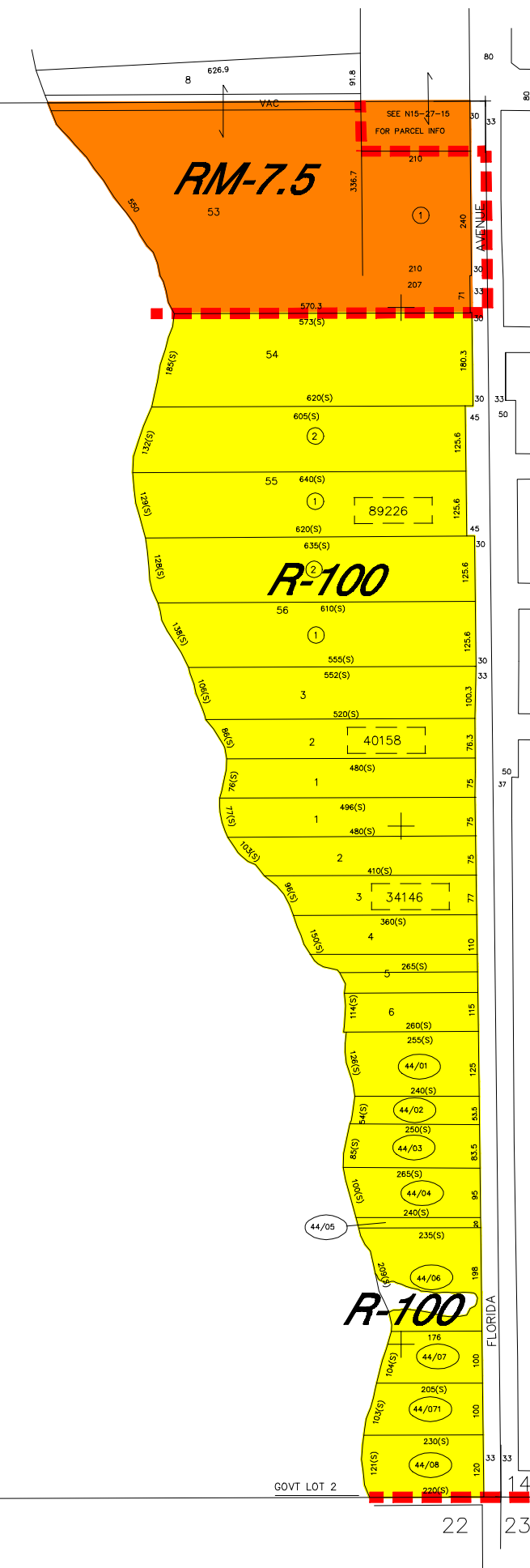
LEGEND

COUNTY LINE	---	AREA (FROM DEED)	10.5	Ac
CITY LIMIT LINE	---	AREA (CALCULATED)	10.5	Ac(c)
TAX DISTRICT LINE	---	DIMENSIONS (FROM DEED)	100.3	
ROAD R/W	---	DIMENSIONS (SCALED)	100(3)	
RAILROAD R/W	---	WATER		
SUB LINE	---	INTERSTATE HIGHWAY		(275)
PROPERTY LINE	---	U.S. HIGHWAY		(19)
LAND HOOK	---	STATE HIGHWAY		(60)
INTERIOR TRACT LINE OR ORIGINAL LOT LINE	---	COUNTY HIGHWAY		(1)
SUB LOT NUMBERS	31	ROADS OR STREETS	BY NAME	
PARCEL NUMBER (M & B)	(44/06)	MAJOR TRANSMISSION LINES	POWER	
BLOCK NUMBER	(2)		GAS OR OIL	
STATE PLANE COORDINATES	375000 +	SECTION CORNERS	2   1	
	275000		11   12	
CHURCHES, SCHOOLS, CENTERS, AIRPORTS, GOVERNMENT LANDS ETC.	BY NAME	ASSIGNED M & B PINELLAS FARMS/GROVES GEO-LOCATOR (BLK. FIELD)	200   100	
			300   400	
SUB NUMBER	(1)	OTHER ASSIGNED BLK./LOT DESIGNATOR	(3)	

REVISIONS

DATE	BY	CHANGES OR ADDITIONS
09/99	TS	UPDATE/MISC
05/93	ENTZ	UPDATE/SPLIT
03/97	JD	UPDATE/COMB
06/92	ENTZ	REDRAFT SECTION
06/96	JD	REDO COORD./REDRAFT SECTION

SECTION S 145  
TOWN 27 SOUTH, RANGE 15 EAST  
MAP NUMBER S15-27-15



NO.	NAME	PB/ PG
34146	GULF FRONT, HOADLEY'S	06/004
40158	HOADLEY'S E.L. ADD	06/033
89226	TAMPA & TARPON SPRINGS LAND CO (14-27-15)	H1/116

Produced by MDT V2.1, Copyright (c) 1991-1992, Pinellas County, Fl. Property Appraiser. All Rights reserved.  
ATTENTION: ALTHOUGH THIS MAP FILE REPRESENTS A SIGNIFICANTLY HIGH DEGREE OF ACCURACY AND COMPLETENESS, IT WAS PREPARED FOR USE IN PROPERTY ASSESSMENT. INFORMATION ON THE COURSE MAY BE AN ERROR OF AN INCH OUT OF DATE FROM AN OFFICIAL PLAT/DEED RECORDING DEPENDING ON THE OFFICE FUNCTIONS OF THIS OFFICE. THIS MAP FILE SHOULD NOT BE RELIED ON FOR ANY PURPOSE AS AN ALTERNATIVE TO A QUALIFIED SURVEY. PLEASE CONSULT A LICENSED PROFESSIONAL LAND SURVEYOR IN ANY MATTER INVOLVING PROPERTY BOUNDARIES OR RIGHTS OF WAY.