

Notice to Mariners

**Commander
USCG Seventh District
Brickell Plaza Federal Building
909 SE 1st Avenue
Miami, FL 33131-3050**

Date of Notice: 03/03/2023
Project Owner: **USACE – Jacksonville District**
701 San Marco Blvd.
Jacksonville, FL 32207

Project Name: Anclote River Maintenance Dredging 9-Foot Project

Contract No. : W912EP21C0011

Prime Contractor: **Diamond Services Corporation**
503 Degravelle Rd
Morgan City, LA 70380

Name of Dredging Vessel: B/V Diamond 6 [D-6]

VHF Channels Monitored: 13 and 16

Project Location: Anclote River Channel and Turning Basin
Pinellas and Pasco Counties, Florida

Dredging Sections: Cut 3, Cut 5, Turning Basin, and as
directed by USACE

Material Disposal: Upland Disposal in DMMA

Project Commencement: On or around 03/10/2023

Project Completion: On or around 05/31/2023

Project Contacts

Project Manager:	Hannah Schorr 337-303-6505
B/V Diamond 6	Dredging Supervisor, Jose Figueroa
Call Sign: WDN5163	985-360-8483
Lady Lafon (Tug Boat):	985-519-9155
Call Sign: WAB8569	

Notice to Mariners

Mariners shall use extreme caution when operating in the vicinity of dredging operations. Vessels shall minimize wake and proceed with caution after passing arrangements are made. High pressure floating and submerged pipelines will be utilized and clearly marked per USCG regulations.

Equipment includes: floating and submerged pipeline, tug boats, spud barge, hopper barges, booster barge. *Configuration of equipment will change daily.*

Dredging operations will only be performed during daylight hours.

Submerged pipe will be placed on channel bottom at 9' MLLW.

Please see attached drawings for further details.

Not to be used for navigational purposes

ANCLOTE ANCHORAGE

PROJECT LIMITS

C-01

C-02

UPLAND DISPOSAL SITE

C-05

COUNTY LINE

ANCLOTE RIVER

C-03

CITY OF TARPON SPRINGS
PINELLAS COUNTY

ANCLOTE KEY

GULF OF MEXICO

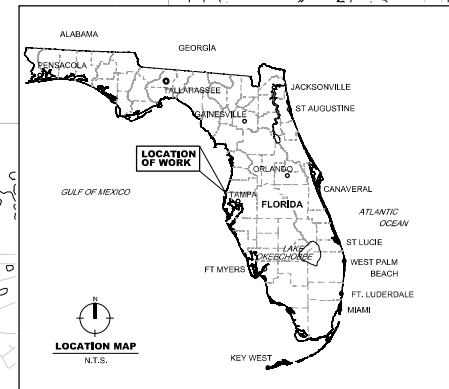
ST JOSEPH SOUND

ESTIMATED DREDGING QUANTITIES IN CUBIC YARDS (CY)

DREDGE AREA	CUT	STATION		VOLUME TO REQUIRED DEPTH	VOLUME IN ALLOWABLE OVERDEPTH	TOTAL
		START	END			
①	3	19+00	24+00	500	2,000	2,500
②	5	1+50	9+50	500	2,000	2,500
③	TB	5+50	13+35	15,000	5,000	20,000
TOTALS				16,000	9,000	25,000

NOTE: VOLUMES INCLUDE ADDITIONAL SHOALING ANTICIPATED TO OCCUR BETWEEN THE TIME OF THE SURVEY AND THE COMMENCEMENT OF DREDGING.

PROJECT OVERVIEW



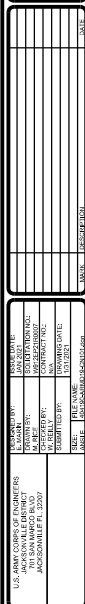
STATE OF FLORIDA
PASCO COUNTY



PROJECT OVERVIEW	
SHEET ID G-03	
GENERAL	
PINELLAS AND PASCO COUNTIES, FLORIDA	
MANTENANCE DREDGING	
ANCLOTE RIVER	
U.S. ARMY CORPS OF ENGINEERS	
JACKSONVILLE DISTRICT	
JACKSONVILLE FIELD OFFICE	
JACKSONVILLE, FL 32207	
PROJECT NO. 13-0000000	
DATE: 10/20/2013	
DRAWN BY: J. J. JONES	
CHECKED BY: J. J. JONES	
APPROVED BY: J. J. JONES	
SCALE: 1" = 1000'	



US Army Corps
of Engineers®



AIDS TO NAVIGATION	PLANE COORDINATES	
	X	Y
GLB-3 (08/18)	391,851	1,397,120
DBN-2 (08/18)	390,395	1,396,368
DBN-4 (08/18)	392,012	1,397,027

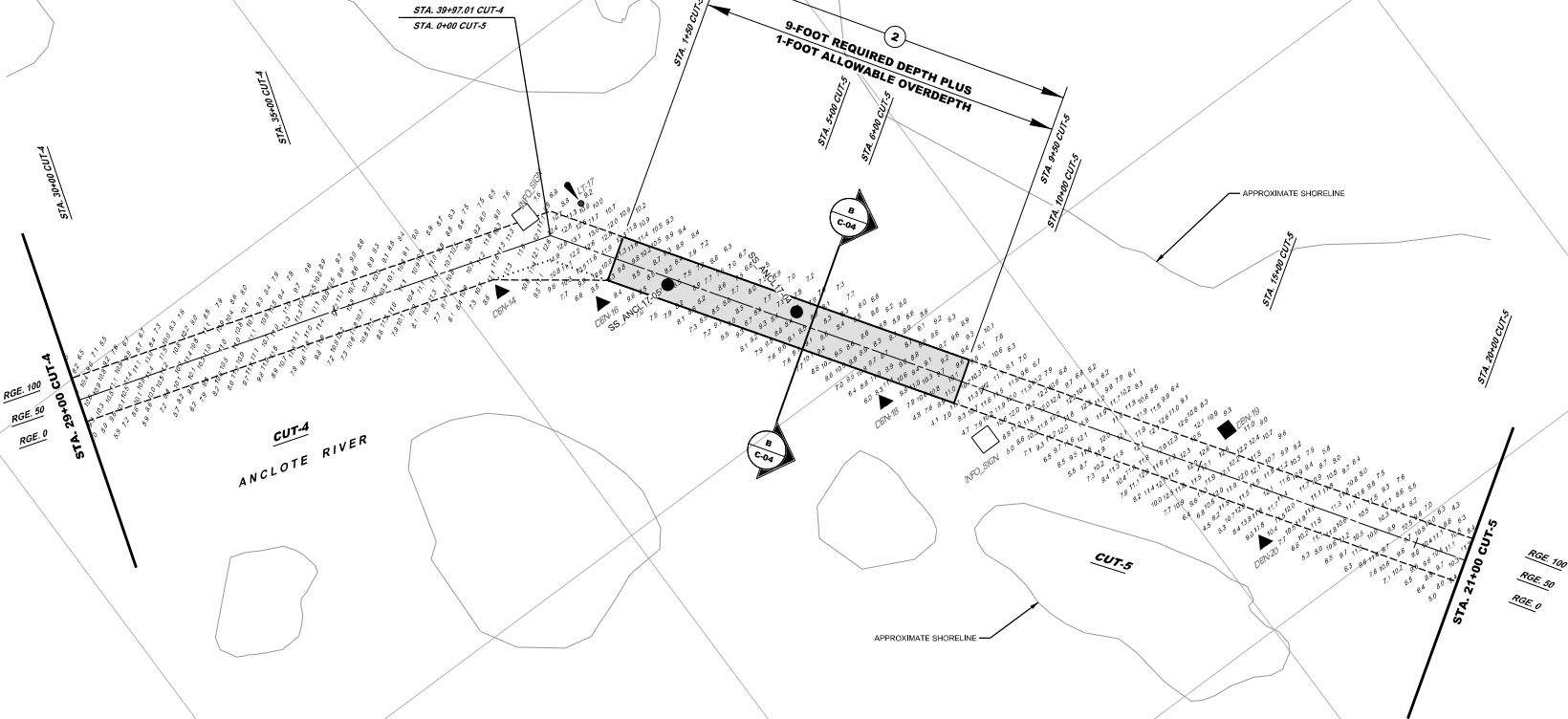
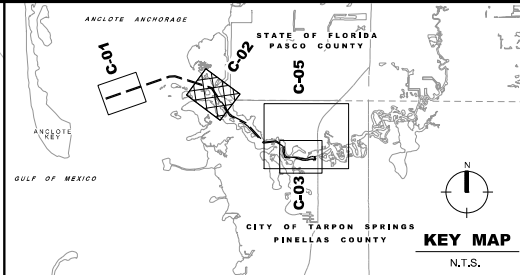
ANCLOTE RIVER
MAINTENANCE DREDGING
IN-PORT PROJECT
PINELLAS AND PASCO COUNTIES, FLORIDA

CIVIL
DREDGIN PLAN
STA. 0+00 CUT-3 TO STA. 32+00 CUT-3

SHEET ID
C-01

114

Not to be used for navigational purposes



AIDS TO NAVIGATION	PLANE COORDINATES	
	X	Y
DBN-14 (08/18)	401.088	1.397,596
DBN-16 (08/18)	401.249	1.397,444
LT-17 (08/18)	401.343	1.397,646
DBN-18 (08/18)	401.615	1.396,905
DBN-19 (08/18)	402.178	1.396,411
DBN-20 (08/18)	402.096	1.396,166
INFO SIGN (08/18)	401.743	1.396,708
INFO SIGN (08/18)	401.228	1.397,694

DREDGING PLAN

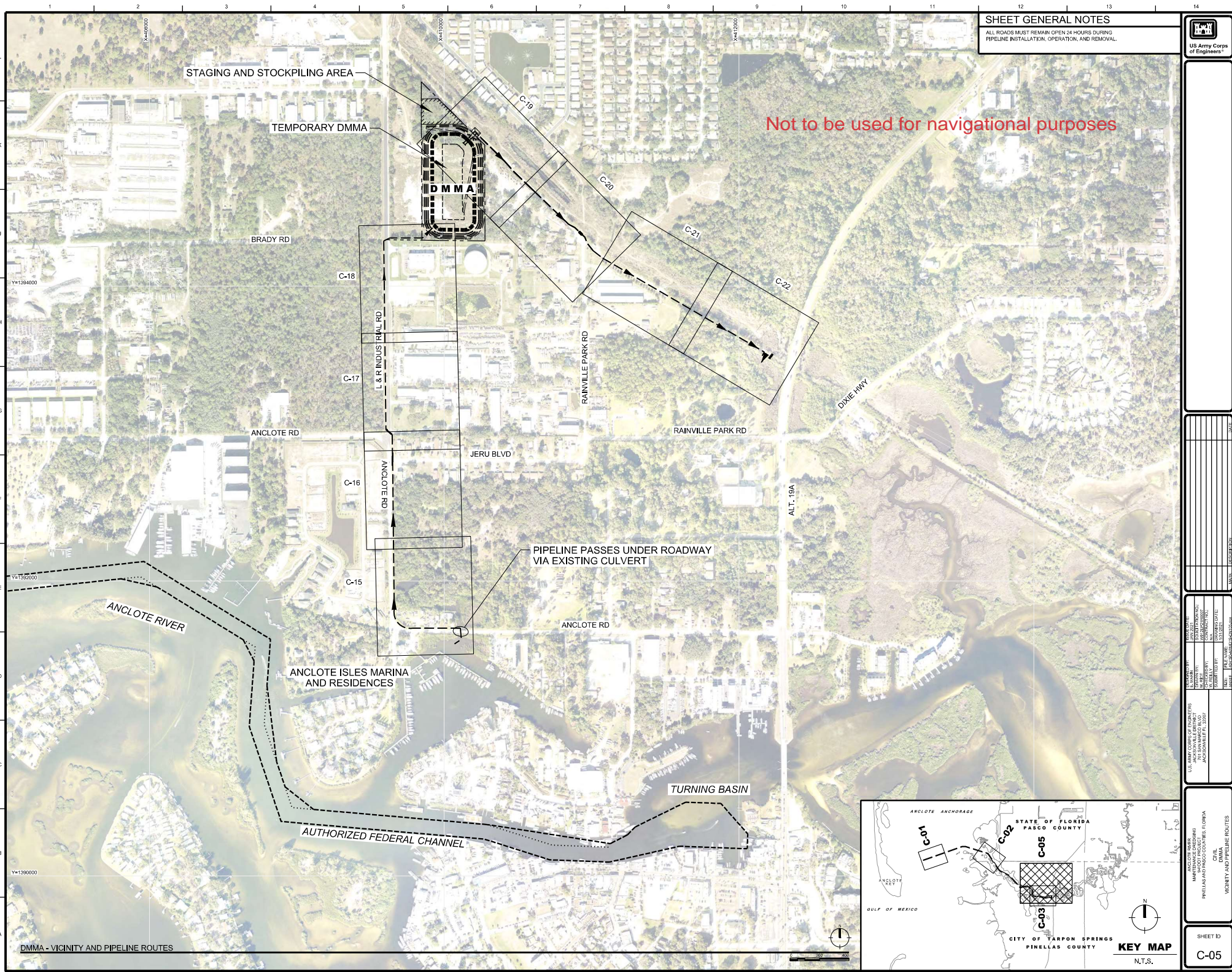


US Army Corps of Engineers

U.S. ARMY CORPS OF ENGINEERS JACKSONVILLE DISTRICT 701 SAN MARCO BLVD JACKSONVILLE FL 32207	DESIGNED BY: E. MARR	ISSUE DATE: JAN 2011
	TRACED BY: M. REE	DECONTAMIN NO.: W92312710007
	CHECKED BY: W. REELEY	CONTRACT NO.: N/A
	SUBMITTED BY:	DRAWING DATE:

ANCLOTE RIVER
MAINTENANCE DREDGING
94-001 PROJECT
PINELLAS AND PASCO COUNTIES, FLORIDA
CIVIL
DREDGING DIVISION

SHEET ID
C-02



SHEET GENERAL NOTES

ALL ROADS MUST REMAIN OPEN 24 HOURS DURING
PIPELINE INSTALLATION, OPERATION, AND REMOVAL.

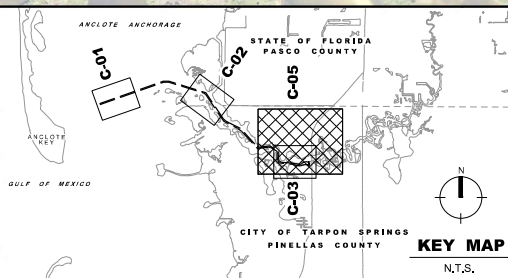


US Army Corps
of Engineers

PROJECT NO.	15-03-0000
PROJECT NAME	ANCLOTE RIVER
PROJECT LOCATION	ANCLOTE RIVER
PROJECT DATE	03/2021
PROJECT SCALE	1"=100'

PROJECT NO.	15-03-0000
PROJECT NAME	ANCLOTE RIVER
PROJECT LOCATION	ANCLOTE RIVER
PROJECT DATE	03/2021
PROJECT SCALE	1"=100'

PROJECT NO.	15-03-0000
PROJECT NAME	ANCLOTE RIVER
PROJECT LOCATION	ANCLOTE RIVER
PROJECT DATE	03/2021
PROJECT SCALE	1"=100'



DMMA - VICINITY AND PIPELINE ROUTES

