

# Anclote O&M Dredge

27 April 2021



Geoff Klug, P.E. Project Manager  
[Geoffrey.M.Klug@usace.army.mil](mailto:Geoffrey.M.Klug@usace.army.mil)  
904-232-3292 / 904-728-4066

Eduardo Marin, P.E. Engineering Technical Lead  
[Eduardo.G.Marin@usace.army.mil](mailto:Eduardo.G.Marin@usace.army.mil)  
904-232-1154

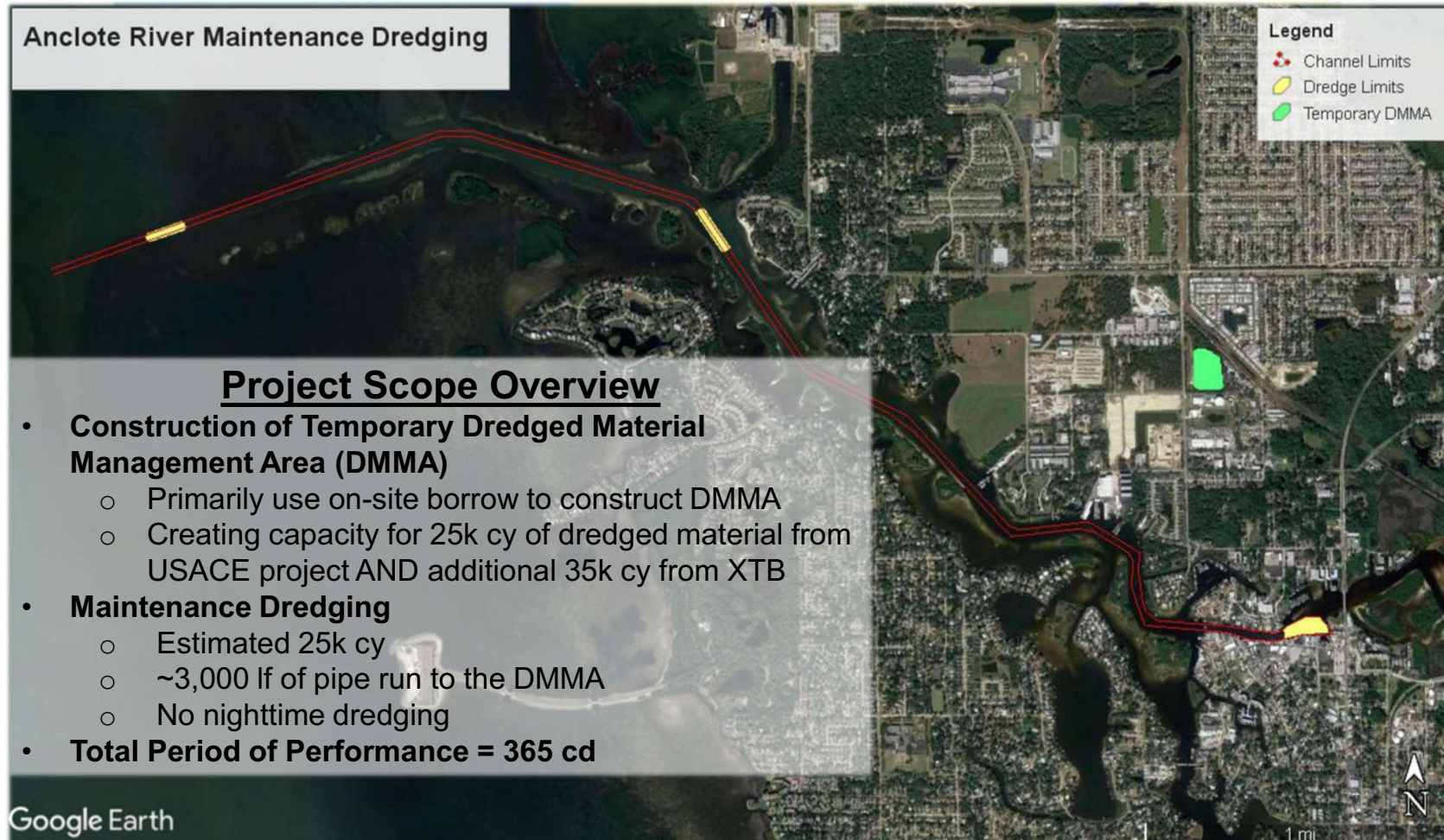




# Anclore O&M Dredge

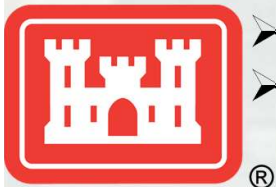


BUILDING STRONG



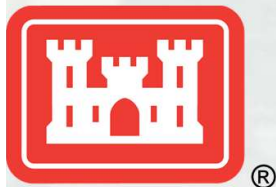
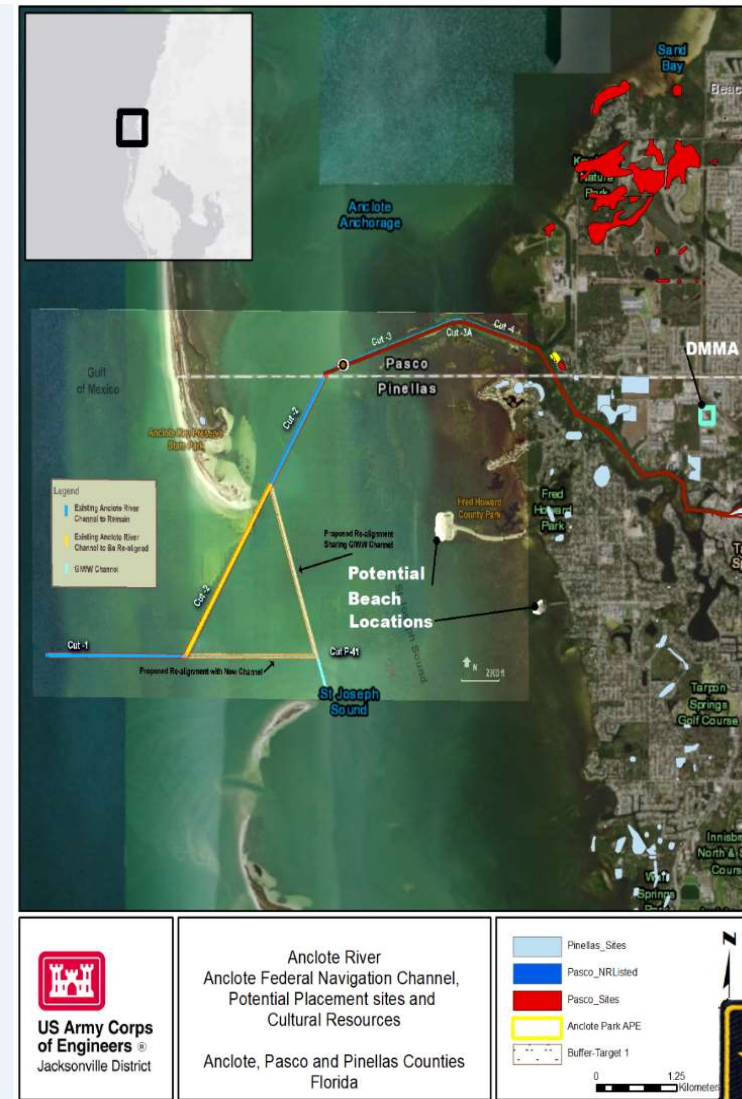
# Anclole O&M Dredge

- **SUMMARY (Previously Briefed to the Board):**
  - Contract was previously advertised under an Invitation for Bid (IFB).
  - No awardable bids were received.
  - Engineering documents were to be updated clarifying requirements for potential offerors
  - Project would be solicited again with a very similar scope.
- **Update (New Since the Previous Brief):**
  - Revisions and additions to the contract documents:
    - Additional geotechnical borings acquired at the DMMA site (which allowed USACE to require use of in-situ material for DMMA construction).
    - Spot elevation survey along the pipeline route to address utility crossings, etc...
    - Further clarified the scope of work.
  - The project was put back out under a new solicitation
    - Request for Proposals (RFP) – Best Value Trade Offs
    - Advertised 4 March 2021
    - Proposals received 6 April 2021
    - Proposals currently under evaluation



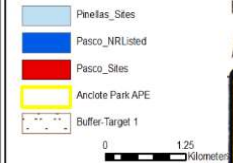
# Anclole O&M Dredge – Phase 2

- **Dependent on future funding**
  - USACE expressed capability for this effort in the FY21 Work Plan budgeting cycle. Unfortunately, the project was not picked up in the FY21 Work Plan.
  - Expressed capability in the FY22 President's Budget (not yet been released)
- **Prospective Scope**
  - Dredging “Outer Cuts” using one of the Corps-owned dredge plants (avoid the contracting process)
  - Tentative realignment of outer cuts
  - Would require lead time once picked up in the Work Plan for environmental coordination (NEPA, DEP permitting, etc)



US Army Corps  
of Engineers  
Jacksonville District

Anclole River  
Anclole Federal Navigation Channel,  
Potential Placement sites and  
Cultural Resources  
Anclole, Pasco and Pinellas Counties  
Florida



U.S. ARMY

# Questions